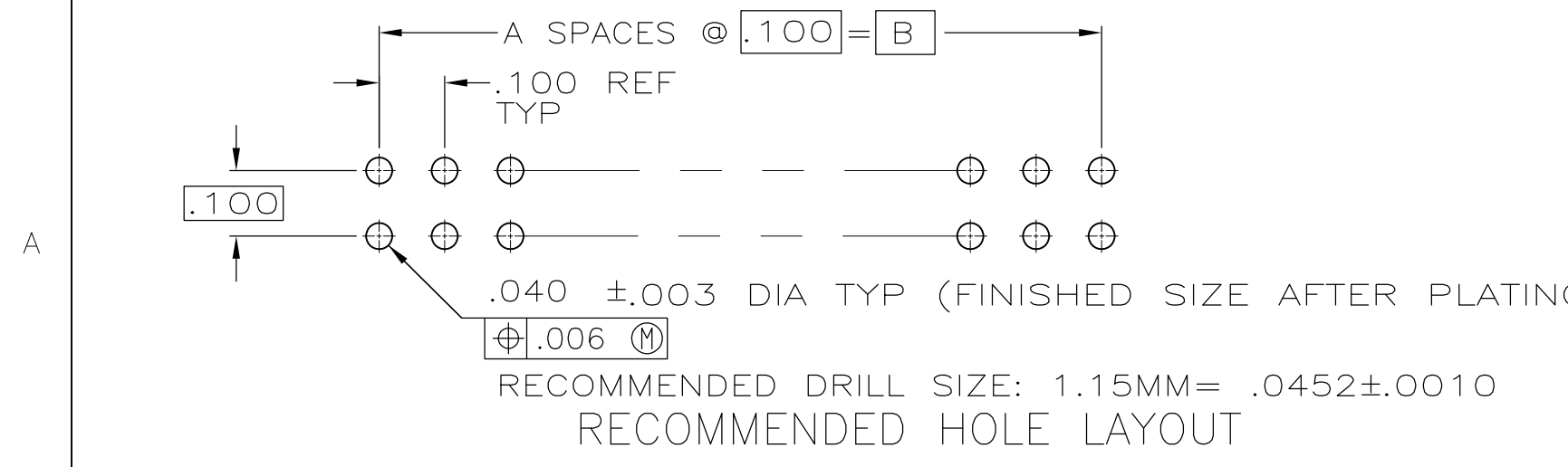
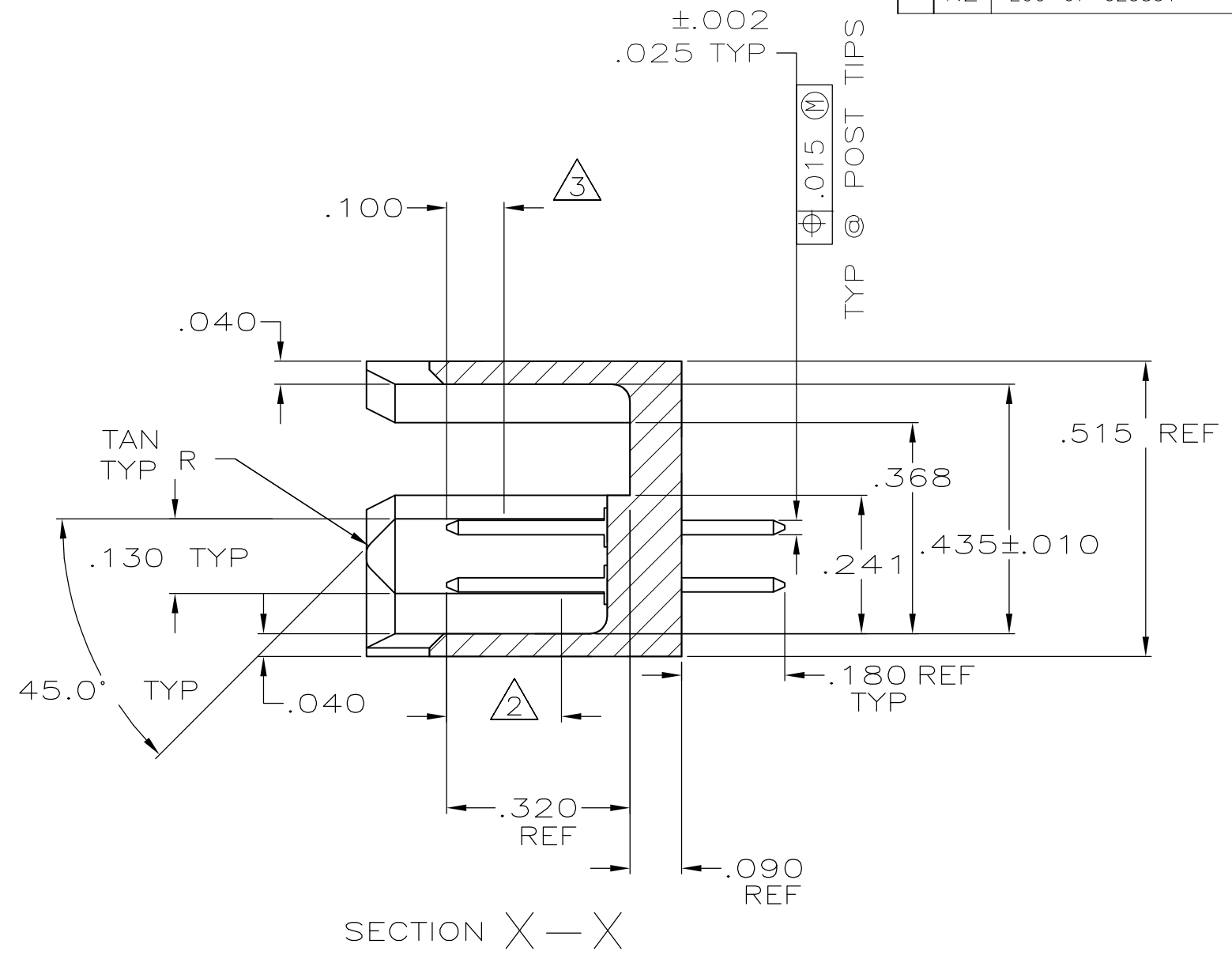
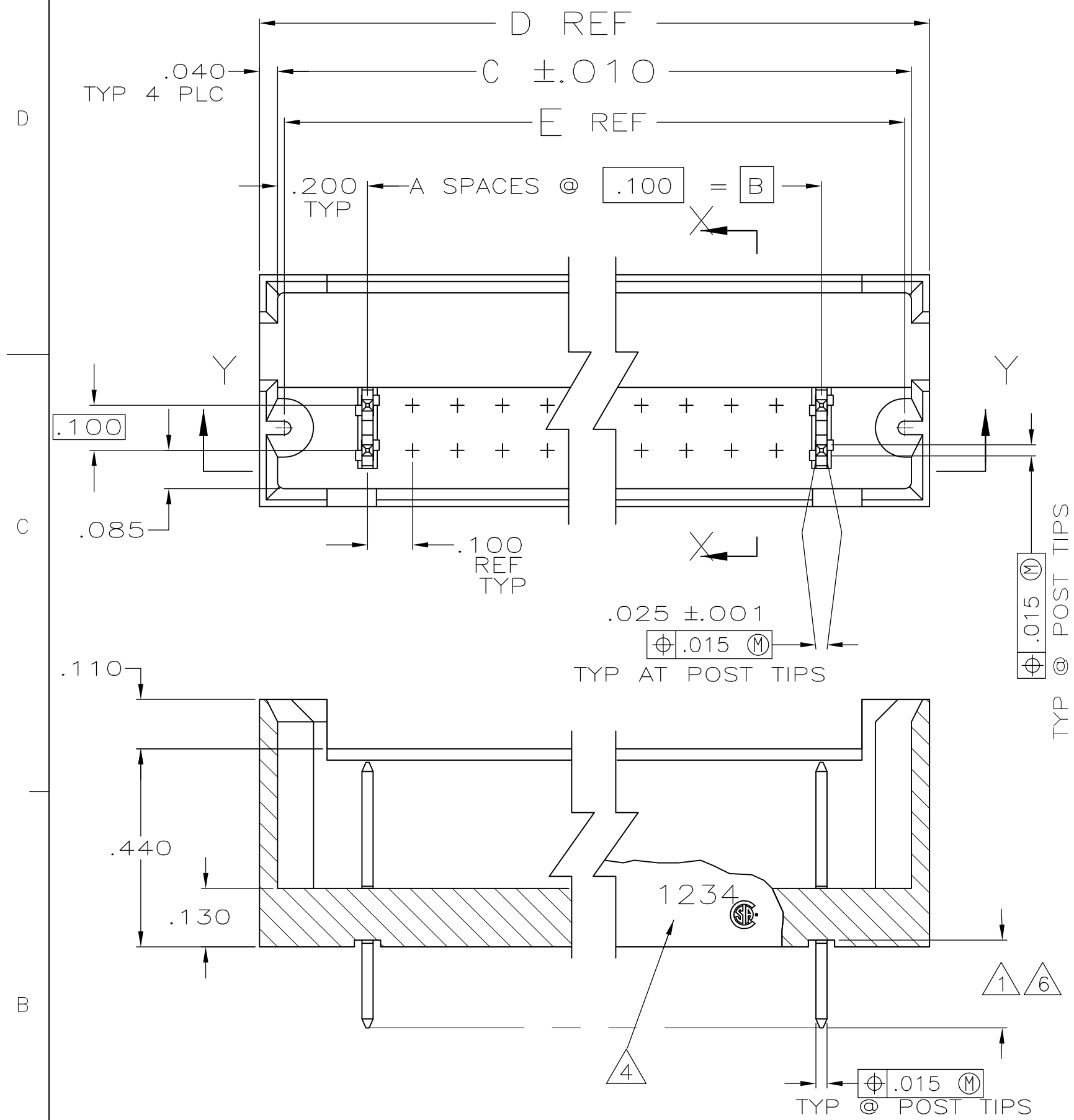


THIS DRAWING IS UNPUBLISHED. RELEASED FOR PUBLICATION
 © COPYRIGHT BY TYCO ELECTRONICS CORPORATION. ALL RIGHTS RESERVED.

LOC		DIST		REVISIONS			
AD	00	P	LTR	DESCRIPTION	DATE	DWN	APVD
		N2		ECO-07-023851	10OCT07	MB	JO



- ① FINISH OVER INDICATED AREA: .000100-.000200 BRIGHT TIN LEAD OVER .000050 NICKEL.
- ② FINISH OVER INDICATED AREA: .000015 GOLD OVER .000050 NICKEL.
- ③ POINT OF MEASUREMENT FOR PLATING THICKNESS.
- ④ RECESSED DATE CODE AND CSA LOGO.
- ⑤ OBSOLETE PART NUMBER.
- ⑥ FINISH OVER INDICATED AREA: .000100-.000200 MATTE TIN OVER .000050 NICKEL.
- ⑦ PRELIMINARY PART.
- ⑧ ROHS 2002/95/EC COMPLIANT
- ⑨ HEADER: GLASS-FILLED, FLAME RETARDANT THERMOPLASTIC COLOR: BLACK POST: COPPER ALLOY

THIS DRAWING IS A CONTROLLED DOCUMENT.		DWN B. HAYMAKER 30MAR00	Tyco Electronics Tyco Electronics Corporation Harrisburg, PA 17105	
DIMENSIONS: INCHES		CHK J. GESFORD 30MAR00	NAME	
TOLERANCES UNLESS OTHERWISE SPECIFIED:		APVD J. GESFORD 30MAR00	PRODUCT SPEC	
0 PLC ± -		APPLICATION SPEC		
1 PLC ± -		SIZE		
2 PLC ± -		CAGE CODE		
3 PLC ± .005		DRAWING NO		
4 PLC ± -		RESTRICTED TO		
ANGLES ± -		A2 00779 C=102567		
MATERIAL		WEIGHT		
FINISH		CUSTOMER DRAWING		
SEE NOTES		SCALE 4:1 SHEET 1 OF 2 REV N2		

THIS DRAWING IS UNPUBLISHED. RELEASED FOR PUBLICATION
 © COPYRIGHT BY TYCO ELECTRONICS CORPORATION. ALL RIGHTS RESERVED.

LOC	DIST	REVISIONS					
AD	00	P	LTR	DESCRIPTION	DATE	DWN	APVD
		-		SEE SHEET 1	-	-	-

△5	1.870	1.980	1.900	1.500	15	32	△8	7-102567-9
△5	9.270	9.380	9.300	8.900	89	180	△8	7-102567-8
△5	7.670	7.780	7.700	7.300	73	148	△8	7-102567-7
△5	6.670	6.780	6.700	6.300	63	128	△8	7-102567-6
△5	4.970	5.080	5.000	4.600	46	94	△8	7-102567-5
△5	2.470	2.580	2.500	2.100	21	44	△8	7-102567-4
△5	.970	1.080	1.000	.600	6	14	△8	7-102567-3
△5	8.270	8.380	8.300	7.900	79	160	△8	7-102567-2
△5	10.270	10.380	10.300	9.900	99	200	△8	7-102567-1
△5	7.270	7.380	7.300	6.900	69	140	△8	7-102567-0
△5	6.770	6.880	6.800	6.400	64	130	△8	6-102567-9
△5	1.070	1.180	1.100	.700	7	16	△8	6-102567-8
	4.570	4.680	4.600	4.200	42	86	△8	6-102567-7
	3.870	3.980	3.900	3.500	35	72	△8	6-102567-6
	5.770	5.880	5.800	5.400	54	110	△8	6-102567-5
	4.770	4.880	4.800	4.400	44	90	△8	6-102567-4
△2△6	1.770	1.880	1.800	1.400	14	30	△8	6-102567-3
	2.270	2.380	2.300	1.900	19	40	△8	6-102567-2
	1.270	1.380	1.300	.900	9	20	△8	6-102567-1
	3.770	3.880	3.800	3.400	34	70	△8	6-102567-0
	5.270	5.380	5.300	4.900	49	100	△8	5-102567-9
	4.270	4.380	4.300	3.900	39	80	△8	5-102567-8
	6.270	6.380	6.300	5.900	59	120	△8	5-102567-7
	2.770	2.880	2.800	2.400	24	50	△8	5-102567-6
	5.070	5.180	5.100	4.700	47	96	△8	5-102567-5
	3.270	3.380	3.300	2.900	29	60	△8	5-102567-4
	2.070	2.180	2.100	1.700	17	36	△8	5-102567-3
	1.470	1.580	1.500	1.100	11	24	△8	5-102567-2
	.870	.980	.900	.500	5	12	△8	5-102567-1
FINISH	E	D	C	B	A	NO. OF POSN		PART NUMBER

SUPERSEDED BY 5-102567-1

△2△6	.870	.980	.900	.500	5	12	△8	3-102567-0
△8△7	1.870	1.980	1.900	1.500	15	32	△8	2-102567-9
	9.270	9.380	9.300	8.900	89	180	△8	2-102567-8
	7.670	7.780	7.700	7.300	73	148	△8	2-102567-7
	6.670	6.780	6.700	6.300	63	128	△8	2-102567-6
	4.970	5.080	5.000	4.600	46	94	△8	2-102567-5
	2.470	2.580	2.500	2.100	21	44	△8	2-102567-4
	.970	1.080	1.000	.600	6	14	△8	2-102567-3
	8.270	8.380	8.300	7.900	79	160	△8	2-102567-2
	10.270	10.380	10.300	9.900	99	200	△8	2-102567-1
	7.270	7.380	7.300	6.900	69	140	△8	2-102567-0
	6.770	6.880	6.800	6.400	64	130	△8	1-102567-9
	1.070	1.180	1.100	.700	7	16	△8	1-102567-8
	4.570	4.680	4.600	4.200	42	86	△8	1-102567-7
	3.870	3.980	3.900	3.500	35	72	△8	1-102567-6
	5.770	5.880	5.800	5.400	54	110	△8	1-102567-5
	4.770	4.880	4.800	4.400	44	90	△8	1-102567-4
	1.770	1.880	1.800	1.400	14	30	△8	1-102567-3
	2.270	2.380	2.300	1.900	19	40	△8	1-102567-2
	1.270	1.380	1.300	.900	9	20	△8	1-102567-1
	3.770	3.880	3.800	3.400	34	70	△8	1-102567-0
	5.270	5.380	5.300	4.900	49	100	△8	102567-9
	4.270	4.380	4.300	3.900	39	80	△8	102567-8
	6.270	6.380	6.300	5.900	59	120	△8	102567-7
	2.770	2.880	2.800	2.400	24	50	△8	102567-6
	5.070	5.180	5.100	4.700	47	96	△8	102567-5
	3.270	3.380	3.300	2.900	29	60	△8	102567-4
	2.070	2.180	2.100	1.700	17	36	△8	102567-3
	1.470	1.580	1.500	1.100	11	24	△8	102567-2
	.870	.980	.900	.500	5	12	△8	102567-1
FINISH	E	D	C	B	A	NO. OF POSN		PART NUMBER

THIS DRAWING IS A CONTROLLED DOCUMENT.		DWN B. HAYMAKER 30MAR00	Tyco Electronics Corporation Harrisburg, PA 17105	
DIMENSIONS: INCHES		CHK J. GESFORD 30MAR00	NAME HEADER ASSEMBLY, MOD II, .100 X .100CL	
TOLERANCES UNLESS OTHERWISE SPECIFIED: 0 PLC ± - 1 PLC ± - 2 PLC ± - 3 PLC ± .005 4 PLC ± - ANGLES ± -		APVD J. GESFORD 30MAR00	PRODUCT SPEC -	
MATERIAL -		FINISH SEE NOTES	APPLICATION SPEC -	RESTRICTED TO -
		WEIGHT -	SIZE A2	CAGE CODE 00779
		CUSTOMER DRAWING	DRAWING NO C=102567	SCALE 4:1
			SHEET 2	OF 2
			REV N2	